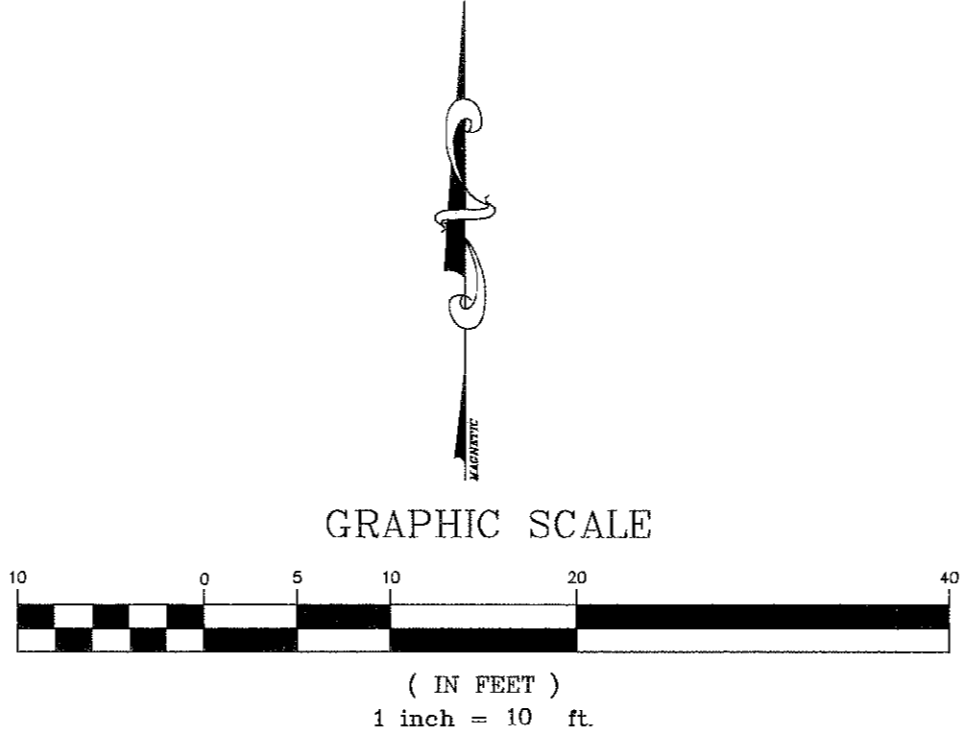
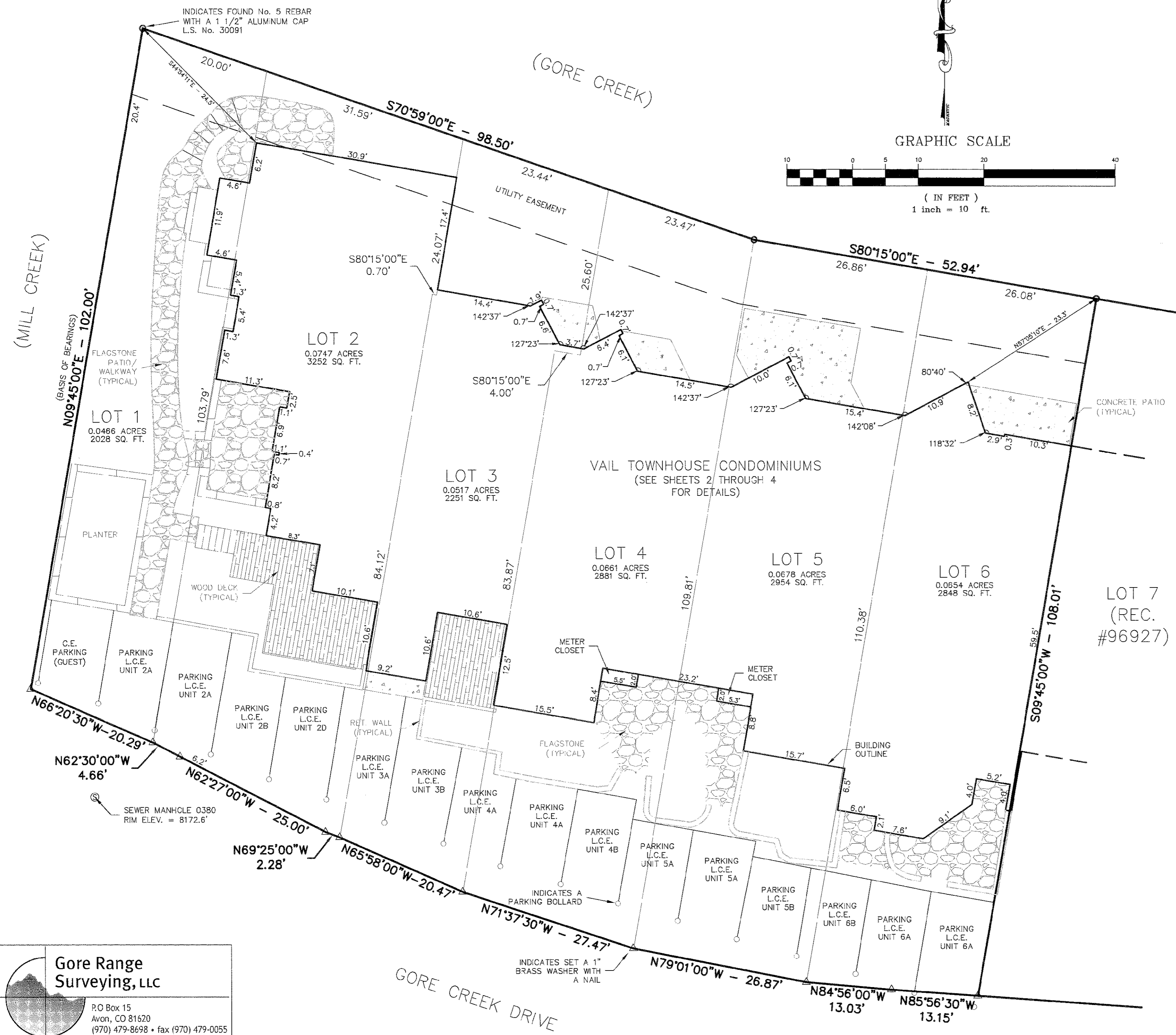


THIRD AMENDED AND RESTATED CONDOMINIUM PLAT
 VAIL TOWNHOUSE CONDOMINIUMS
 VAIL VILLAGE, FIRST FILING
 RESUBDIVISION OF BLOCK 5 AND A PART OF GORE CREEK DRIVE
 LOTS 1 THROUGH 6
 TOWN OF VAIL, COUNTY OF EAGLE, STATE OF COLORADO

TRACT B, VAIL VILLAGE FIRST FILING
 (REC. #96382)



GENERAL NOTES:

- DATE OF SURVEY: AUGUST, 2009.
- BEARINGS BASED UPON THE MONUMENTS SET MARKING THE WESTERLY BOUNDARY OF SAID LOT 1, BEING N09°45'00"E (SEE DRAWING).
- BASIS OF ELEVATIONS: SEWER MANHOLE 3880, RIM ELEV. = 8167.2' (SEE DRAWING).
- THE SOLE PURPOSE OF THIS CONDOMINIUM PLAT IS TO ACCURATELY DEPICT THE CURRENT LOCATION OF UNITS, LIMITED COMMON ELEMENTS AND COMMON ELEMENTS FOR VAIL TOWNHOUSE CONDOMINIUMS. THIS PLAT SUPERCEDES AND REPLACES ALL PREVIOUS PLATS FOR VAIL TOWNHOUSE CONDOMINIUMS.
- GORE RANGE SURVEYING LLC DID NOT PERFORM A TITLE SEARCH OF THE SUBJECT PROPERTY TO ESTABLISH OWNERSHIP, EASEMENTS OR RIGHTS OF WAY OF RECORD. RECORD DOCUMENTS UTILIZED IN THE PREPARATION OF THIS CONDOMINIUM PLAT WERE PROVIDED BY LAND TITLE GUARANTEE CO., ORDER NO. VC5005330, DATED JULY 24, 2009.
- NOTICE: ACCORDING TO COLORADO LAW YOU MUST COMMENCE ANY LEGAL ACTION BASED UPON ANY DEFECT IN THIS SURVEY WITHIN THREE YEARS AFTER YOU FIRST DISCOVER SUCH DEFECT. IN NO EVENT, MAY ANY ACTION BASED UPON ANY DEFECT IN THIS SURVEY BE COMMENCED MORE THAN TEN YEARS FROM THE DATE OF CERTIFICATION SHOWN HEREON.
- THE ENTIRE VAIL TOWNHOUSES COMMUNITY IS SUBJECT TO TERMS, CONDITIONS AND PROVISIONS CONTAINED IN CONDOMINIUM DECLARATION RECORDED JANUARY 29, 1984 IN BOOK 125 AT PAGE 578; FIRST ADDENDUM TO DECLARATION RECORDED JANUARY 29, 1984 IN BOOK 125 AT PAGE 593; SECOND ADDENDUM TO DECLARATION RECORDED MARCH 11, 1985 IN BOOK 187 AT PAGE 51; AND THIRD ADDENDUM TO DECLARATION RECORDED DECEMBER 11, 1985 IN BOOK 187 AT PAGE 485.
- THE ENTIRE VAIL TOWNHOUSES COMMUNITY IS SUBJECT TO THAT CERTAIN AMENDED AND RESTATED DECLARATION FOR VAIL TOWNHOUSES CONDOMINIUMS RECORDED ON MAY 16, 2005 AT RECEPTION NO. 20050915803, AND AMENDMENT AND SUPPLEMENTAL CONDOMINIUM DECLARATION FOR VAIL TOWNHOUSES CONDOMINIUMS RECORDED JANUARY 10, 2007 AT RECEPTION NO. 200708655.
- ALL PORTIONS OF THE SUBJECT PROPERTY ARE COMMON ELEMENTS, UNLESS INDICATED OTHERWISE.
- THE TERMS "C.E." OR "COMMON ELEMENT" (A.K.A. "GENERAL COMMON ELEMENT") USED ON THIS CONDOMINIUM PLAT SHALL MEAN THE SAME AS THE TERM "COMMON ELEMENT" AS DEFINED IN THE DECLARATION AND THE TERMS "L.C.E." OR "LIMITED COMMON ELEMENT" USED ON THIS CONDOMINIUM PLAT SHALL MEAN THE SAME THING AS THE TERM "LIMITED COMMON ELEMENT" AS DEFINED IN THE DECLARATION.
- ALL RECORDING REFERENCES SHOWN HEREON ARE TO THE REAL ESTATE RECORDS IN THE OFFICE OF THE CLERK AND RECORDER OF EAGLE COUNTY, COLORADO.

Surveyor's Certificate

I, do hereby certify that I am a Professional Land Surveyor licensed under the laws of the State of Colorado, that this condominium plat is true, correct and complete as laid out, plated, dedicated and shown hereon, that such condominium plat was made from an accurate survey of said property by me and under my supervision and correctly shows the horizontal and vertical location and dimensions of the condominiums, parcels, easements and streets of said condominium plat as the same are staked upon the ground in compliance with applicable regulations governing the subdivision of lands; and that such map complies with, and contains all the information required by C.R.S. Section 38-33.3-209 and all other statutes and regulations applicable to plats of condominium common interest communities that this condominium plat fully and accurately depicts the improvements, including the condominium units and common areas, and identifies the location, layout, dimensions and horizontal and vertical boundaries of the improvements; that such plat was prepared subsequent to substantial completion of the improvements; and that, in accordance with the requirements of C.R.S. Section 38-33.3-201(2), all structural components of the buildings containing the condominium units created by the Declaration are substantially completed.

In Witness Whereof, I have set my hand and seal this 11th day of SEPTEMBER, A.D., 2009.

Samuel H. Ecker
 Colorado P.L.S. No. 30091



Title Certificate

Land Title Guarantee Company does hereby certify that the Title to all lands shown upon this plat have been examined and is vested in the parties that have executed or consented to the Amended and Restated Condominium Declaration for Vail Townhouse Condominiums, a Colorado non-profit corporation and that title to such lands is free and clear of all liens and encumbrances, except as follows:

(None)

Dated this 2nd day of SEPTEMBER, A.D., 2009.

Agent signature: [Signature] Address: LAND TITLE
101 S. PINE ST. 20.
SUITE 203
VAIL, CO 81657

Agent name: SARAH DOMAN

Certificate of Dedication and Ownership

Know all men by these presents that Vail Townhouses Condominium Association, a Colorado non-profit corporation representing the owners of all that real property situated in the Town of Vail, Eagle County, Colorado described as follows:

Lots 1, 2, 3, 4, 5, and 6, Resubdivision of Block 5, and a part of Gore Creek Drive, Vail Village, First Filing per the plat thereof recorded January 9, 1963, at Reception No. 96927 in the office of the Eagle County Clerk and Recorder

containing 0.372 acres more or less; have by these presents laid out, platted and subdivided the same into condominium units as shown on this condominium plat under the name and style of Vail Townhouse Condominiums, a subdivision in the Town of Vail, County of Eagle; and does hereby accept the responsibility for the completion of required improvements; and does hereby dedicate and set apart all of the public roads and other public improvements and places as shown on the accompanying plat to the use of the public forever; and does hereby dedicate those portions of said real property which are indicated as easement on the accompanying plat as easements for the purpose shown hereon; and does hereby grant the right to install and maintain necessary structures to the entity responsible for providing the services for which the easements are established.

EXECUTED this 14 day of Sept, A.D., 2009.

Owner: Vail Townhouses Condominium Association
 a Colorado non-profit corporation Address: 600 Vail Valley Drive
 Vail, CO 81657

By: [Signature]
 Title: Property Manager

STATE OF Colorado
 COUNTY OF Eagle

The foregoing Certificate of Dedication and Ownership was acknowledged before me this 14 day of September, A.D., 2009, by David Buehler as Prop. Mgr. of Vail Townhouses Condominium Association, a Colorado non-profit corporation.

My Commission expires: My Commission Expires
12/25/2012

Witness my hand and official seal.

[Signature]
 Notary Public

Administrator Certificate

This condominium plat is hereby approved by the Town of Vail Administrator this 2nd day of November, a.d. 2009.

ATTEST:

[Signature]
 Town Clerk
 Town of Vail, Colorado

[Signature]
 Administrator
 Town of Vail, Colorado



Certificate of Taxes Paid

I, the undersigned, do hereby certify that the entire amount of taxes and assessments due and payable upon all parcels of real estate described on this condominium plat are paid in full.

Dated this 11th day of SEPTEMBER, A.D., 2009.
[Signature]
 Treasurer of Eagle County

Clerk and Recorder's Certificate

This condominium plat was filed for record in the Office of the Clerk and Recorder at 1:20 o'clock PM on this 11th day of November, 2009 and is duly recorded at Reception No. 200924515.

[Signature]
 Clerk and Recorder, Eagle County, Colorado

By: [Signature] Deputy

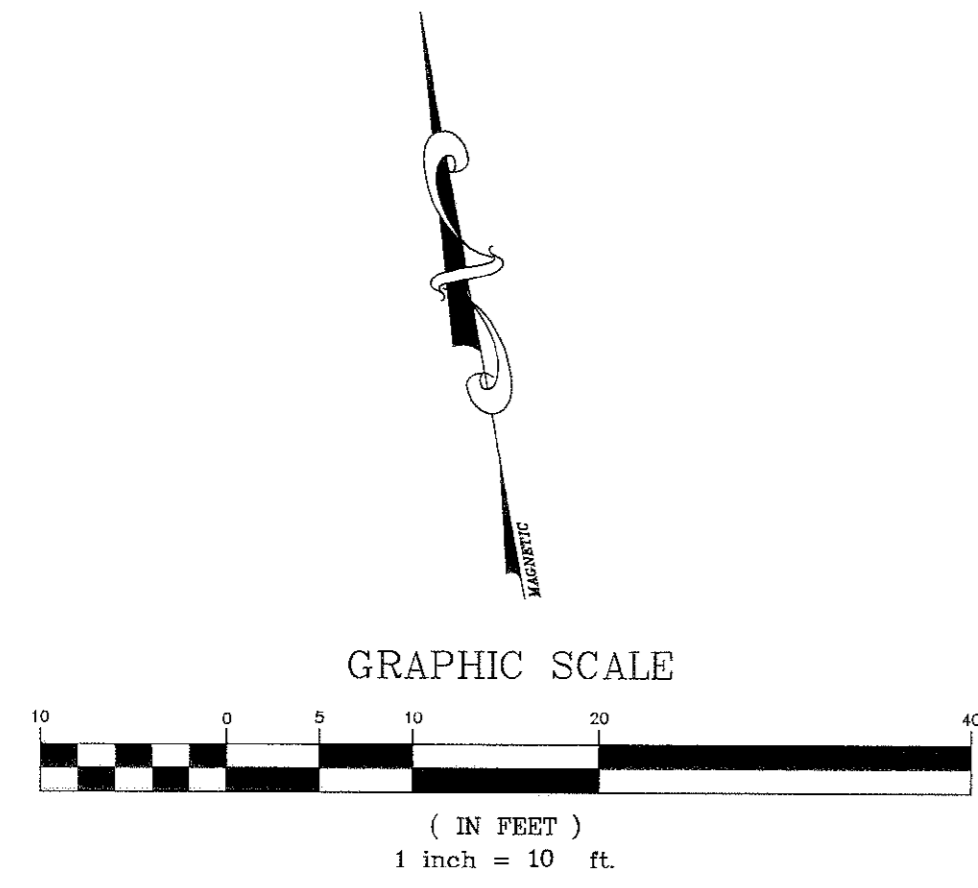


Gore Range Surveying, LLC
 P.O. Box 15
 Avon, CO 81620
 (970) 479-8698 • fax (970) 479-0055

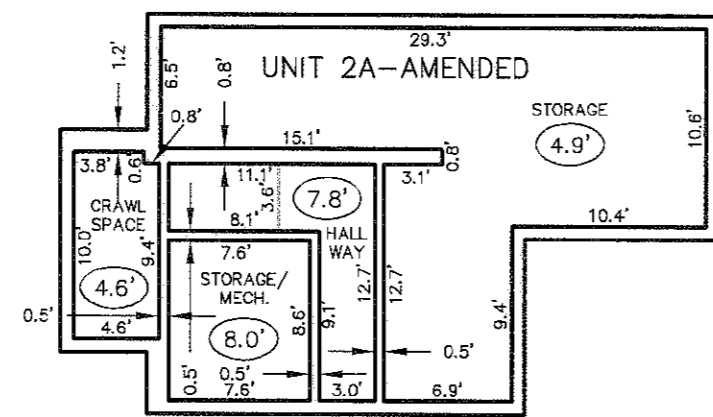
DRAWN BY:	SE	DATE:	8/04/2009
CHECKED BY:	SE	DRAWING NO.:	125G-condo
JOB NO.:	03-125	SHEET:	1 OF 4

THIRD AMENDED AND RESTATED CONDOMINIUM PLAT
VAIL TOWNHOUSE CONDOMINIUMS
 VAIL VILLAGE, FIRST FILING
 RESUBDIVISION OF BLOCK 5 AND A PART OF GORE CREEK DRIVE
 LOTS 1 THROUGH 6
 TOWN OF VAIL, COUNTY OF EAGLE, STATE OF COLORADO

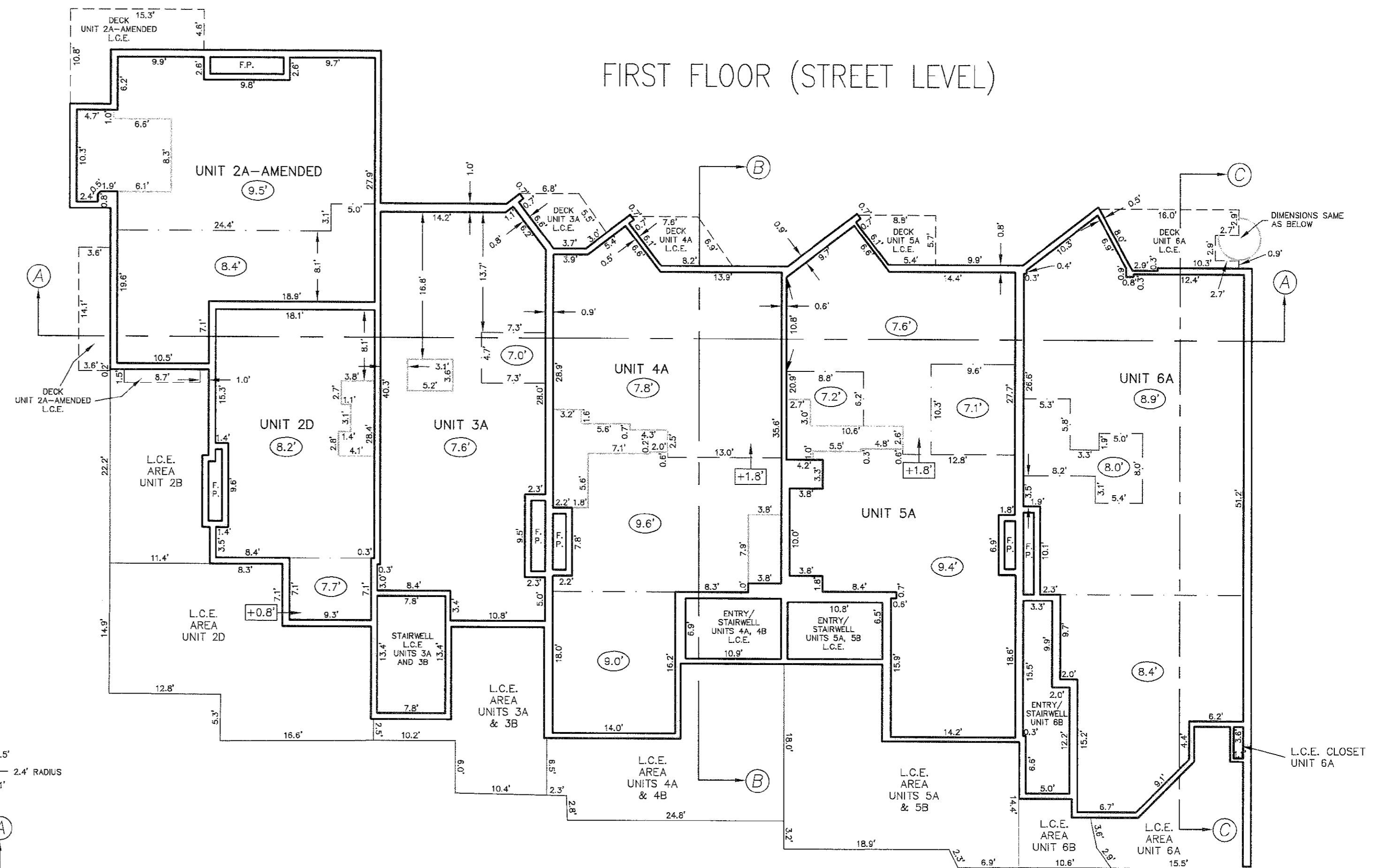
BASEMENT, LOWER LEVEL & FIRST FLOOR



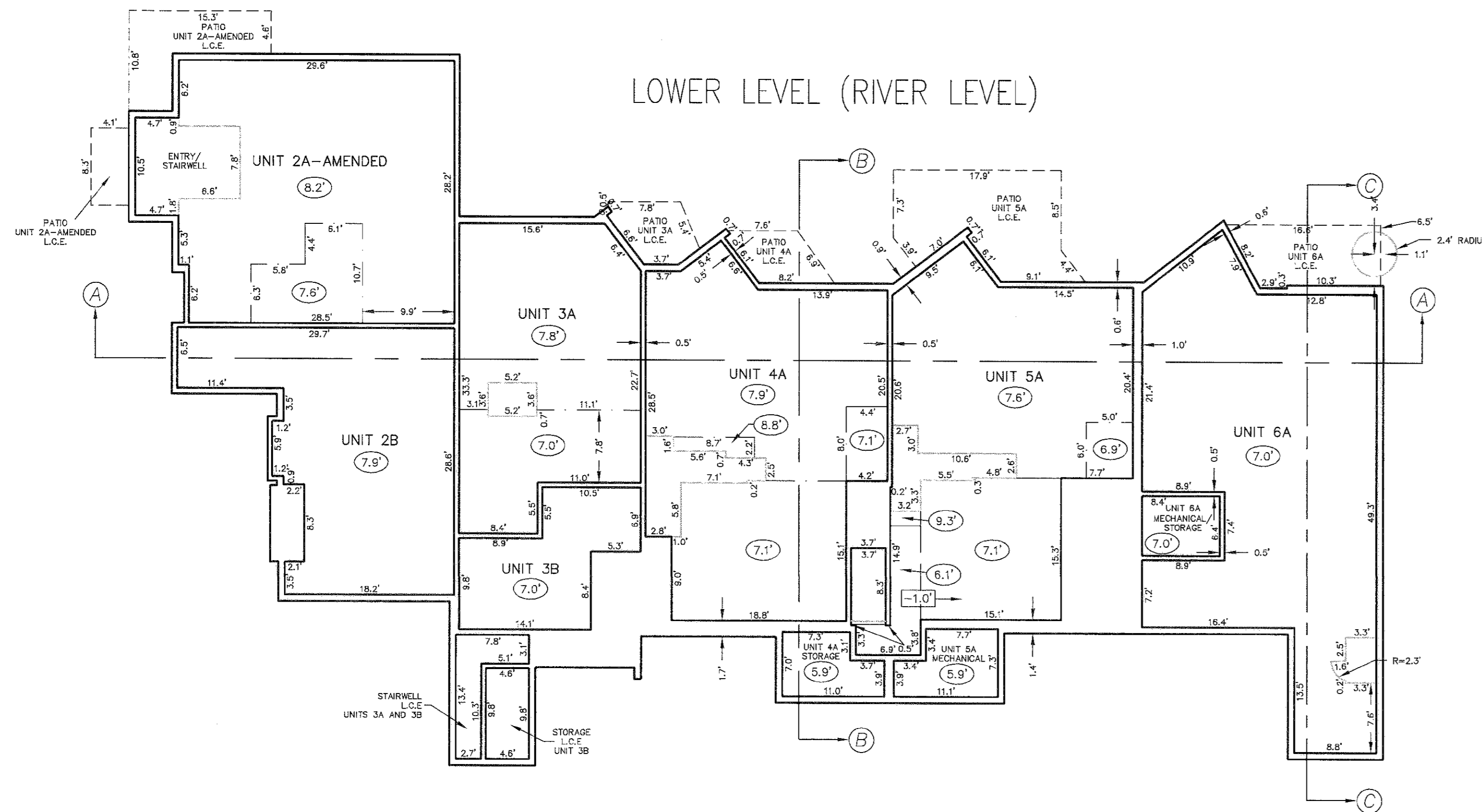
BASEMENT
ELEVATION = 8155.3'



FIRST FLOOR (STREET LEVEL)



LOWER LEVEL (RIVER LEVEL)



LEGEND

- BUILDING/FOUNDATION
- INDICATES CHANGE IN FLOOR HEIGHT
- DECK/PORCH
- INDICATES CHANGE IN CEILING HEIGHT
- STAIRWELL
- INDICATES CHANGE IN FLOOR HEIGHT/DIRECTION
- INDICATES HEIGHT OF CEILING ABOVE FLOOR
- C.E. COMMON ELEMENT
- L.C.E. LIMITED COMMON ELEMENT
- F.P. FIREPLACE

NOTES:

- 1) ALL WALLS ARE PARALLEL, PERPENDICULAR, OR AT 45° UNLESS NOTATED OTHERWISE OR AS SHOWN ON SHEET 1.
- 2) ALL WALLS ARE 0.7" THICK UNLESS NOTATED OTHERWISE.
- 3) ALL FIREPLACES ARE LIMITED COMMON ELEMENTS UNLESS OTHERWISE NOTATED.
- 4) ARROWS INDICATE DIRECTION OF CEILING DOWNSLOPE.

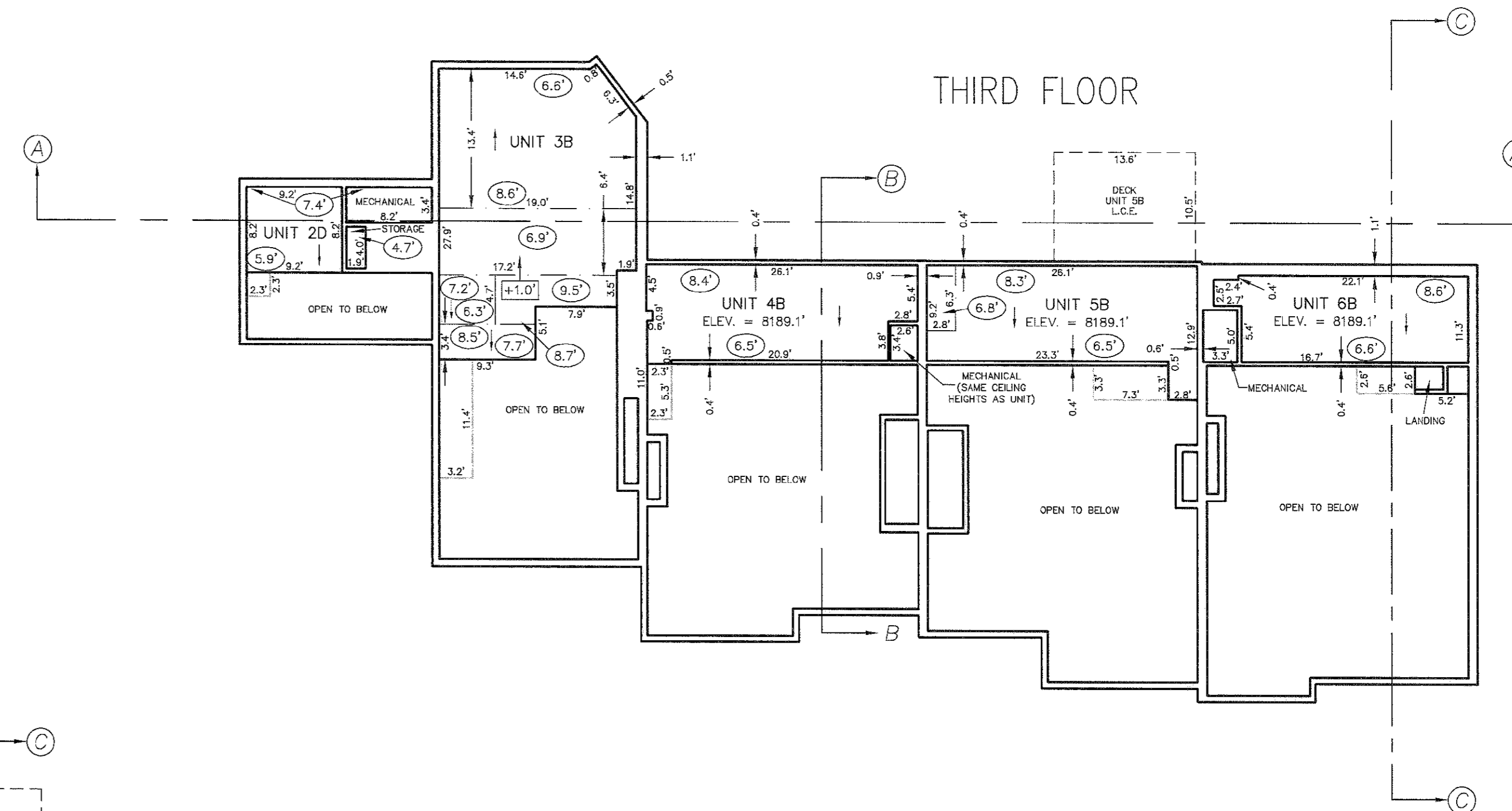
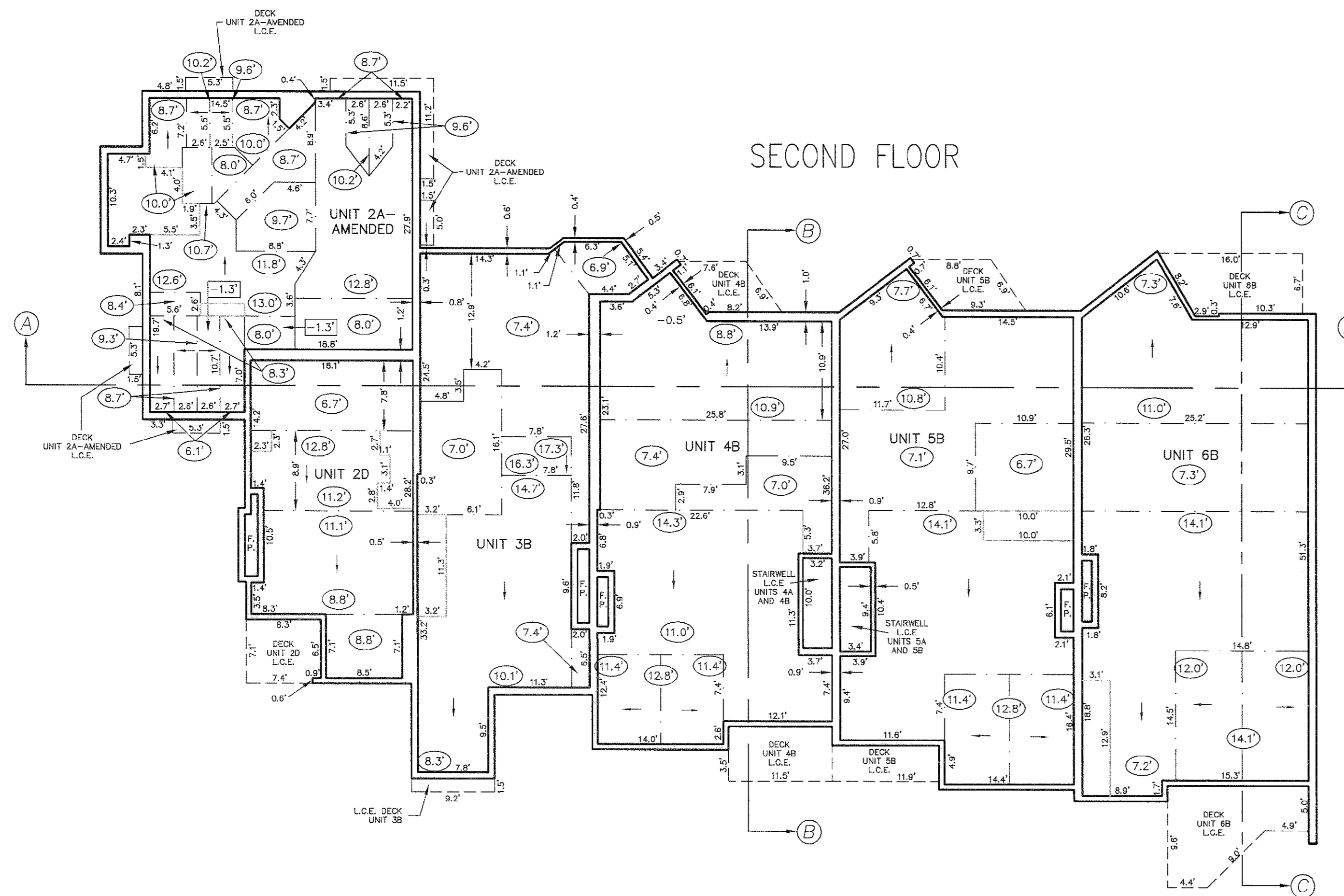
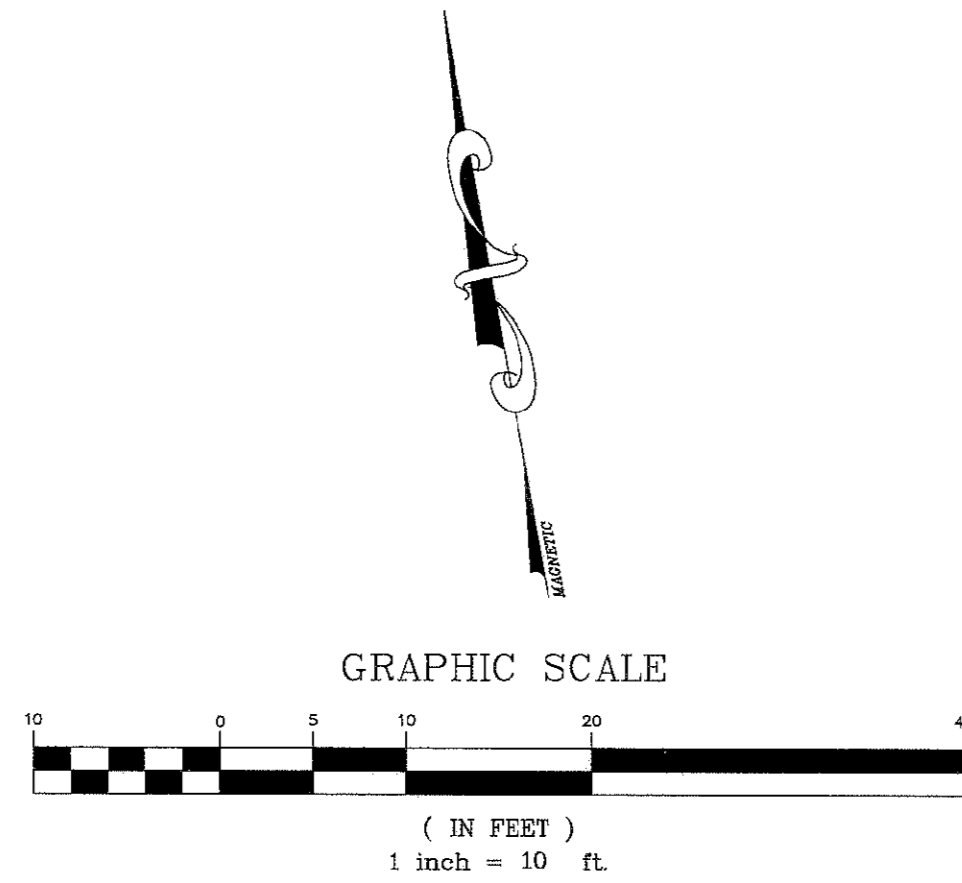
Gore Range Surveying, LLC
 R.O. Box 15
 Avon, CO 81620
 (970) 479-8698 • fax (970) 479-0055



DRAWN BY: SE	DATE: 8/04/2009
CHECKED BY: SE	DRAWING NO.: 03-125a-condo
JOB NO.: 03-125	SHEET 2 OF 4

THIRD AMENDED AND RESTATED CONDOMINIUM PLAT
VAIL TOWNHOUSE CONDOMINIUMS
 VAIL VILLAGE, FIRST FILING
 RESUBDIVISION OF BLOCK 5 AND A PART OF GORE CREEK DRIVE
 LOTS 1 THROUGH 6
 TOWN OF VAIL, COUNTY OF EAGLE, STATE OF COLORADO

SECOND FLOOR & THIRD FLOOR



LEGEND

---	BUILDING/FOUNDATION
---	INDICATES CHANGE IN FLOOR HEIGHT
---	DECK/PORCH
---	INDICATES CHANGE IN CEILING HEIGHT
---	STAIRWELL
-X-X-	INDICATES CHANGE IN FLOOR HEIGHT/DIRECTION
(X)	INDICATES HEIGHT OF CEILING ABOVE FLOOR
C.E.	COMMON ELEMENT
L.C.E.	LIMITED COMMON ELEMENT
F.P.	FIREPLACE

NOTES:

- 1) ALL WALLS ARE PARALLEL, PERPENDICULAR, OR AT 45° UNLESS NOTATED OTHERWISE OR AS SHOWN ON SHEET 1.
- 2) ALL WALLS ARE 0.7" THICK UNLESS NOTATED OTHERWISE.
- 3) ALL FIREPLACES ARE LIMITED COMMON ELEMENTS UNLESS NOTATED OTHERWISE.
- 4) ARROWS INDICATE DIRECTION OF CEILING DOWNSLOPE.

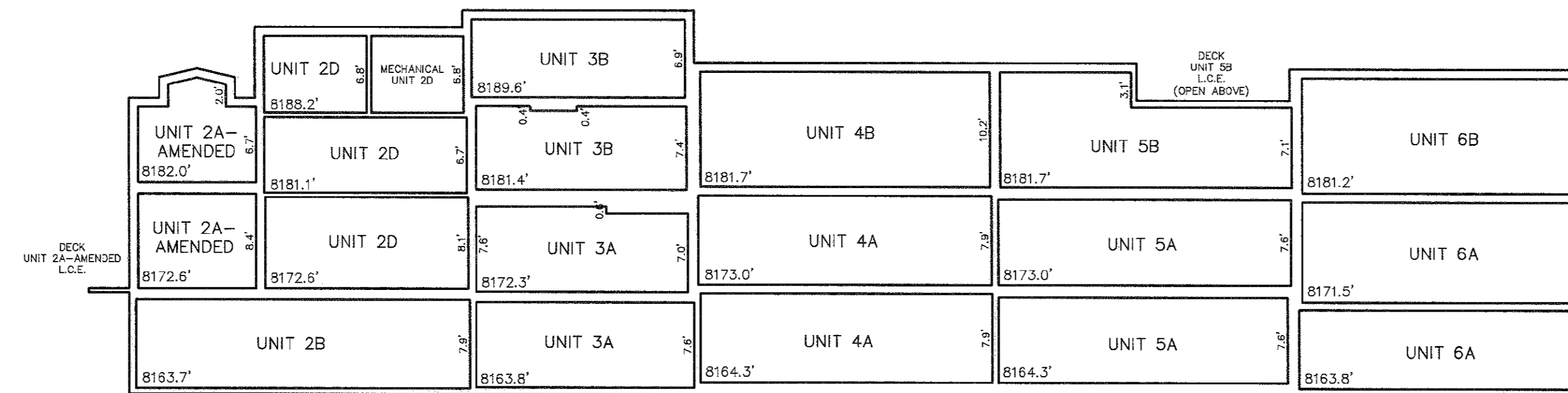
Gore Range Surveying, LLC
 P.O. Box 15
 Avon, CO 81620
 (970) 479-8698 • fax (970) 479-0055



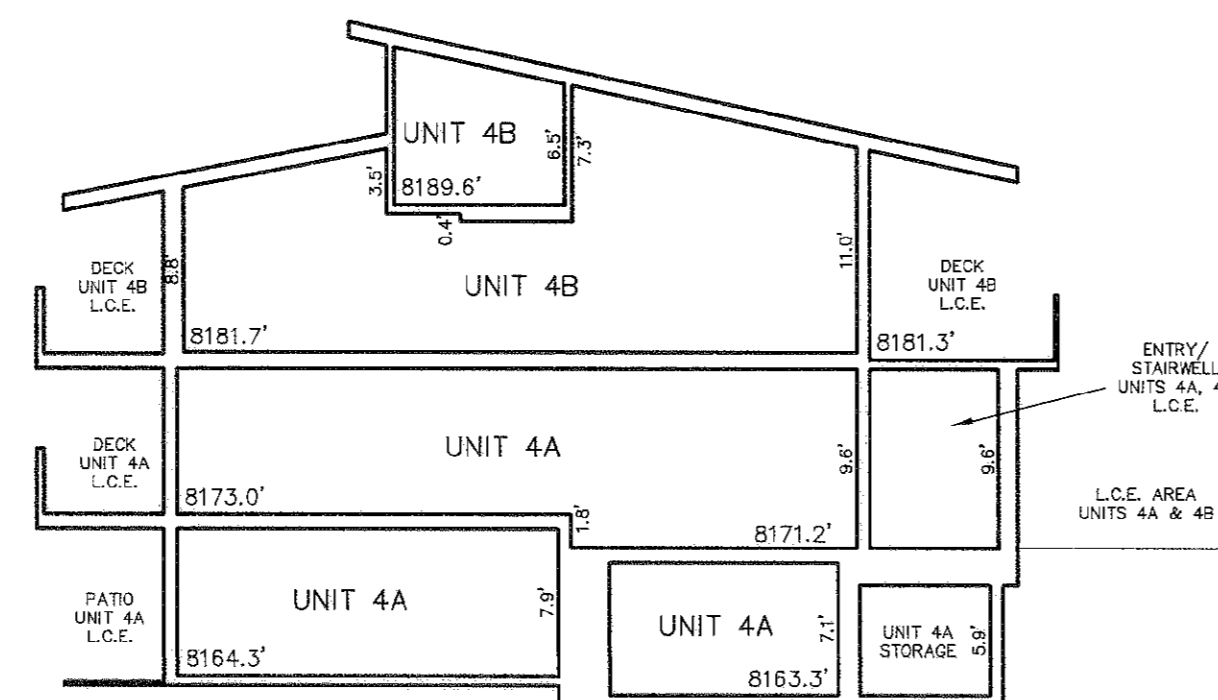
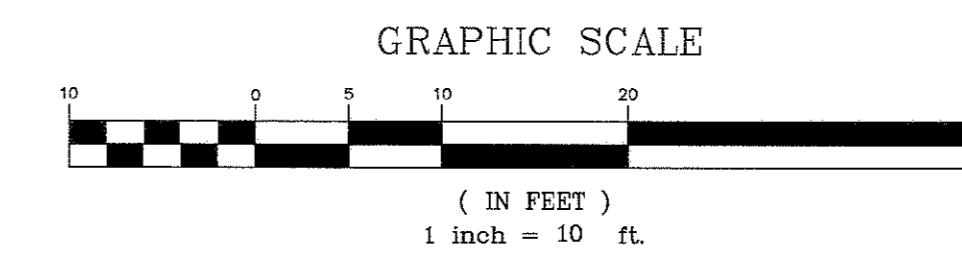
DRAWN BY:	SE	DATE:	8/04/2009
CHECKED BY:	SE	DRAWING NO.:	03-125-125a-condo
JOB NO.:	03-125	SHEET:	3 of 4

THIRD AMENDED AND RESTATED CONDOMINIUM PLAT
VAIL TOWNHOUSE CONDOMINIUMS
 VAIL VILLAGE, FIRST FILING
 RESUBDIVISION OF BLOCK 5 AND A PART OF GORE CREEK DRIVE
 LOTS 1 THROUGH 6
 TOWN OF VAIL, COUNTY OF EAGLE, STATE OF COLORADO

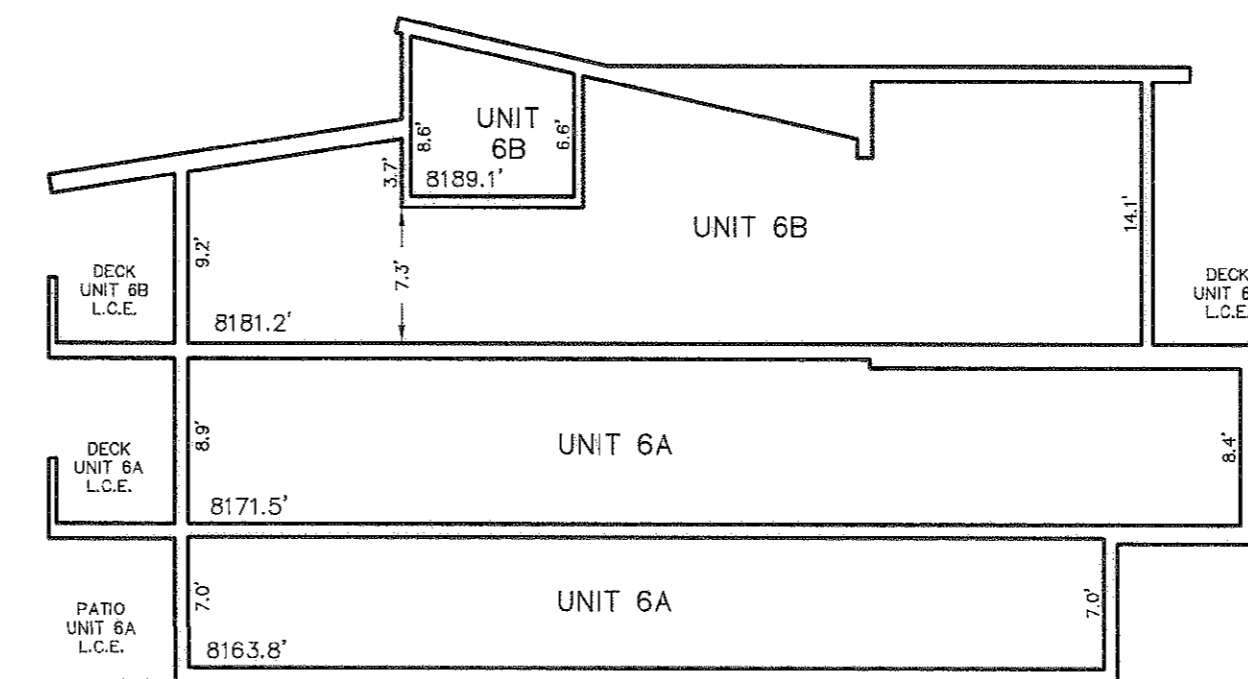
SECTION DETAILS



SECTION (A)

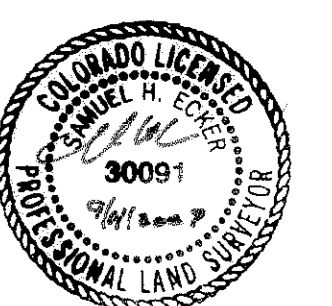


SECTION (B)



SECTION (C)

Gore Range Surveying, LLC
 P.O. Box 15
 Avon, CO 81620
 (970) 479-8698 • fax (970) 479-0055



DRAWN BY:	SE	DATE:	8/04/2009
CHECKED BY:	SE	DRAWING NO.:	03-125-condo
JOB NO.:	03-125	SHEET:	4 of 4